





# SRI SATHYA SAI COLLEGE FOR WOMEN

FIELD PROJECT : POLITICAL SCIENCE



## REFERENCING BOOKS & STUDY OF CENTRAL LIBRARY

PRESENTED BY:  
RIDDHI PATIDAR &  
FIRDOSH RAHMAN  
B.A.2ND YEAR



# INDEX

## CHAPTER 1:

- INTRODUCTION AND SCOPE OF PROJECT WORK
- REFERENCING
- DETAILS ABOUT THE WORK PLACE

## CHAPTER 2:

- SECTIONS OF THE LIBRARY
- SAMPLE QUESTIONNAIRE

## CHAPTER 3:

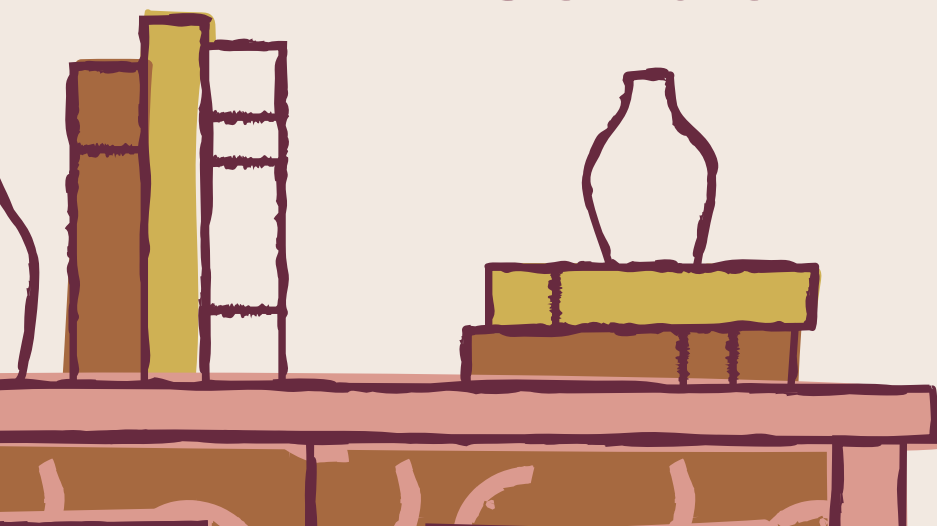
- CHALLENGES



# CHAPTER 1

## 1. INTRODUCTION AND SCOPE OF PROJECT WORK

- New Education Policy-2020 has brought new & practical way of learning, which includes internship or a field project in major subject.
- For academic session 2022-23, I have chosen field project in my major subject Political science.
- The topic for my field project is "Referencing Books & study of Central Library".



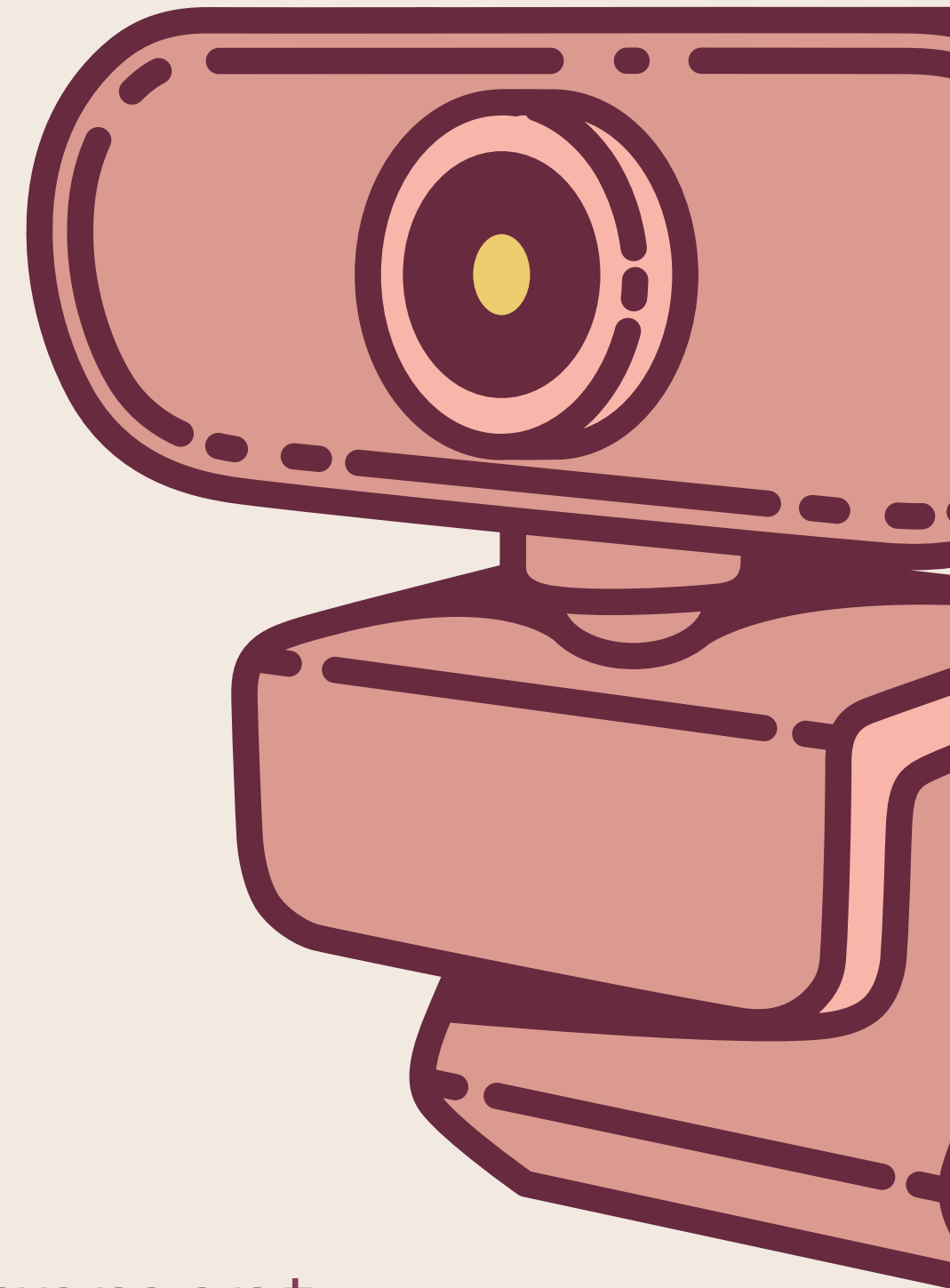
- This project will be a study of:
  - ~ Referencing of books related to our syllabus of Indian Political thinkers & Western Political thought.
  - ~ College's central library.
  - ~ Books in Political science section.
  - ~ Functioning & management of library.

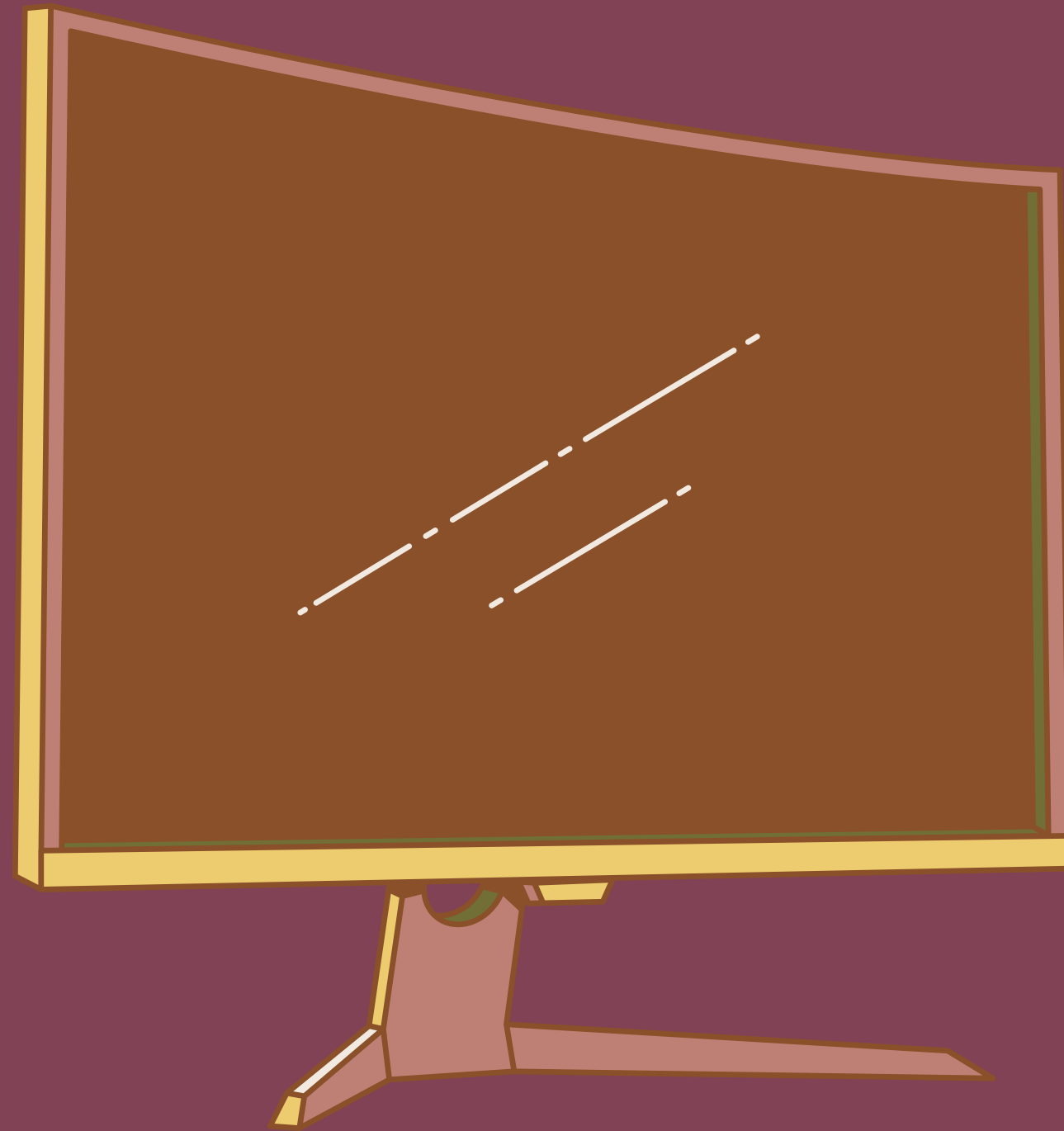


## 2. REFERENCING

### ~ What is Referencing ?

- Referencing is used to tell the reader where the ideas from other sources have been used in an assignment. It shows the reader that you can find and use sources to create a solid argument.
- Referencing is important part of an successful academic writing. It helps you to avoid plagiarism while doing your assignments.
- Referencing contains 2 crucial elements:
  - a. in-text citation
  - b. entry in the refernce list at the end of your assignment.





- The reference list is usually alphabetized by author names. Other details in the reference list are the name of the author, year of publication, title of your sources.

## ~ Different styles of Referencing

- There are many citation styles but these are the most common :
  - a. **APA ( AMERICAN PSYCHOLOGICAL ASSOCIATION ) :**  
This style is used by, in the fields of Psychology, Science, Education.
  - b. **MLA ( MODERN LANGUAGE ASSOCIATION ) :**  
This style is used in the field of Humanities.
  - c. **CHICAGO/ TURABIAN :**  
This style is mainly used in the fields of History, Business and Fine Arts.





## ~ APA format of referencing

APA is the most common citation styles in academic works. Developed by American Psychological Association, it is one of the citation styles that uses the author-date system.

## ~ APA 7th edition

APA 7th is an 'author/date' system, so in text references for all formats consists of author(s) surname & year of publication.





## ~ Referencing : Indian Political Thinker [English]

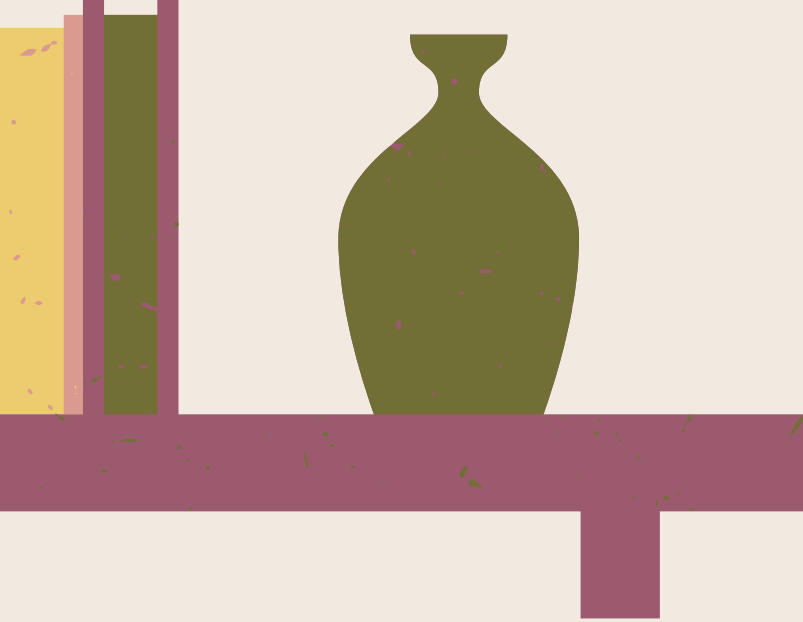
1. Bali Dev Raj (1984). Modern Indian Thought, Sterling Publishers Pvt. Ltd.
2. Prasad D. Ravindra Prasad V.S., Satyanarayana P., (1991) Administrative Thinkers, Sterling Publishers Private Ltd.
3. Shauma M.L. (1980), Gandhi as a socialist, Seep and Deep Publications
4. Kytile Calvin (1982), Gandhi - Soldive of Non-violenc An Introduction Seven Locks Press
5. Sukla S.K. (2009), Gandhi Perspectives on Satyagraha Movement and Non-Violence, Omega Publications.
6. Singh Ramjee, Sundaram S. (1996), Gandhi and the would Ouder, APH Publishing Cooperation
7. Jatava D.R. (1998), B.R. Ambedkar study in society and Politics National Publishing House
8. Patil V.T. (1983), Studies on Gandhi, Sterling Publishers Pvt. Ltd.
9. Sharma U. (1992), Modern India Political Thought, Lakshmi Narain Agarwal Education Publishers



## ~ Referencing : Western Political Thought [English]

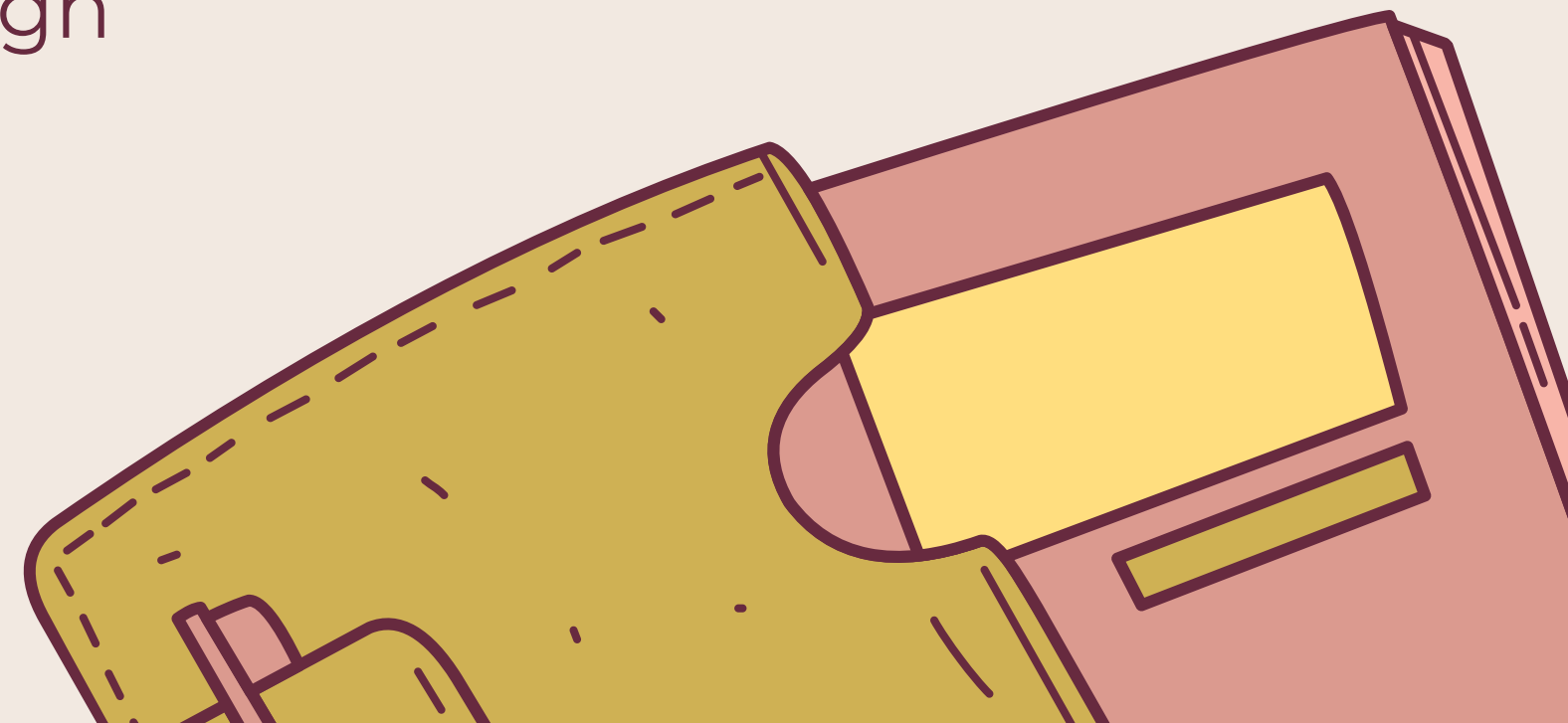
1. Ellenstein William, (1966), Great Political Thinker : Plato to present third edition, Oxford & IBH Pub. Co.
2. Halliday R. J., (1976), John Stuart Mill, George Allen and Unwin Ltd.
3. Joad CEM, (1983), Introduction to Modern Political Thought, Oxford University Press
4. Johari J. C., (1985), Political Thought: Modern and recently, Metropolitan book and Co. Pvt. Ltd.  
Introduction Seven Locks Press
5. Jowett Benjamin, (1970), The dialogues of Plato vol.1: The apology and other dialogues, Sphere Books Ltd.
6. Lancaster Lane W., (1975), Masters of Political Thought vol.3: Hegel to Dewey, Oxford University Press
7. Mehta V.R., (1968), Hegel and Modern state: An introduction to Hegel's political thought, Associated Publishing House
8. Morall John B., (1977), Aristotle, George Allen and Unwin Ltd.





### 3. DETAILS ABOUT THE WORK PLACE

- Name of the Library : Sri Sathya Sai Women's College Central Library
- Establishment year : 1974
- Area : 10,000 sq. ft.
- Total sections in the Library : 25
- Total number of Books in the Library : 35,381 (issuing + reference)
- Faculty :  
Librarian : Smt. Khushboo Singh  
Assistant Librarian : Miss Poornima Singh  
Book Lifter : Smt. Sujata  
Helping Staff : Mrs. Mamta Thapa







GPS Map Camera

kasturba nagar bhopal  
sri sathya sai college for women, central library

23.227531°

77.44447°  
26/12/22 02:04 PM GMT +05:30



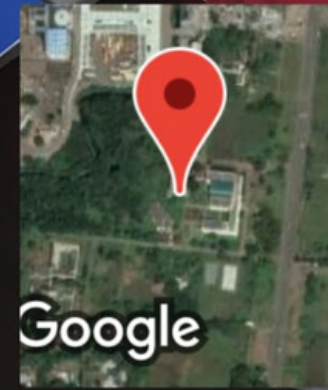
GPS Map Camera

kasturba nagar bhopal  
sri sathya sai college for women, central library

Lat 23.227531°

Long 77.44447°

26/12/22 02:04 PM GMT +05:30

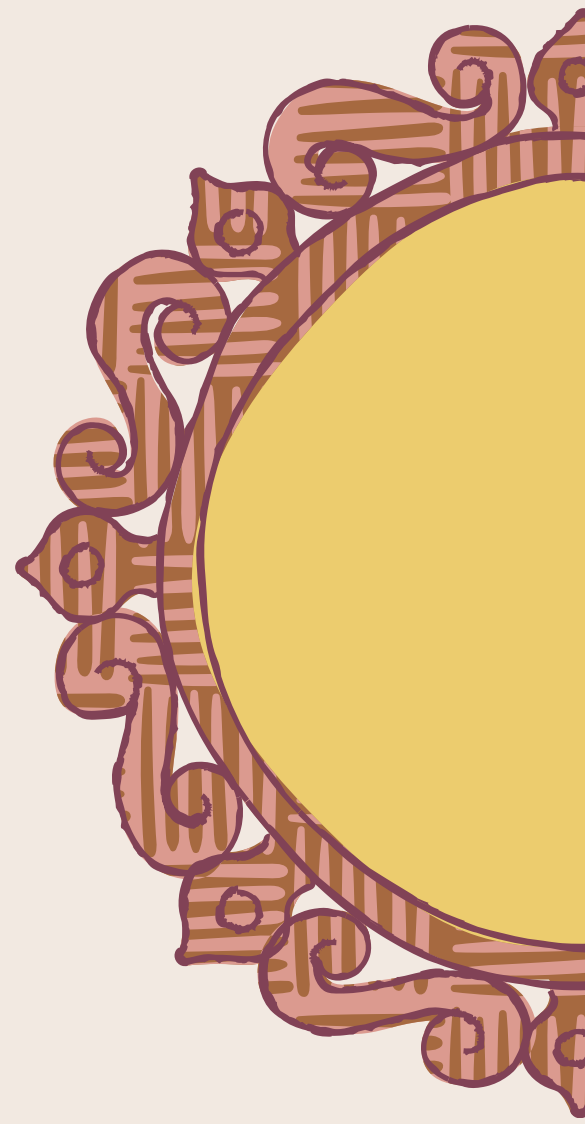
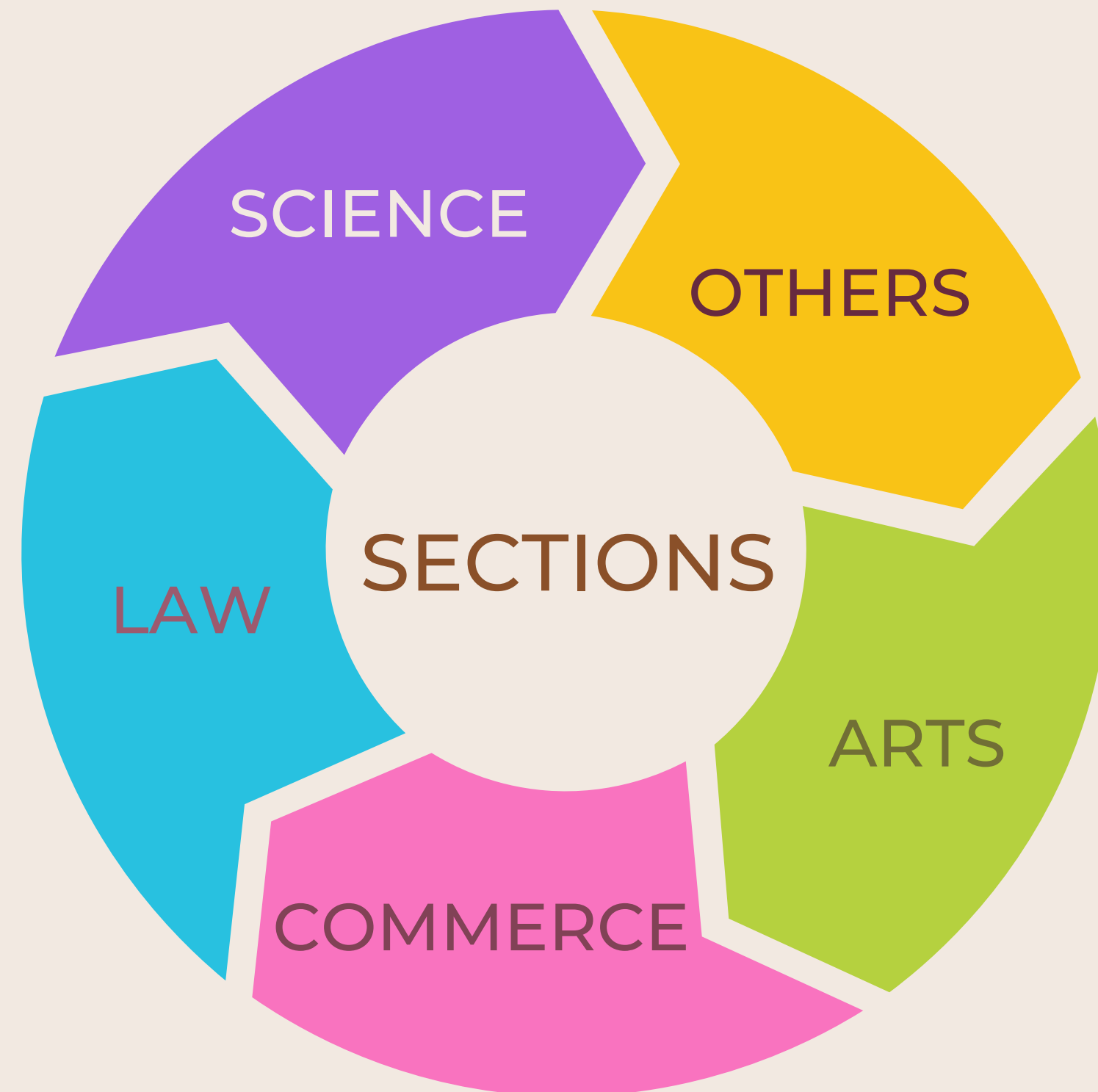


Google




# CHAPTER 2

## 1. SECTIONS OF THE LIBRARY





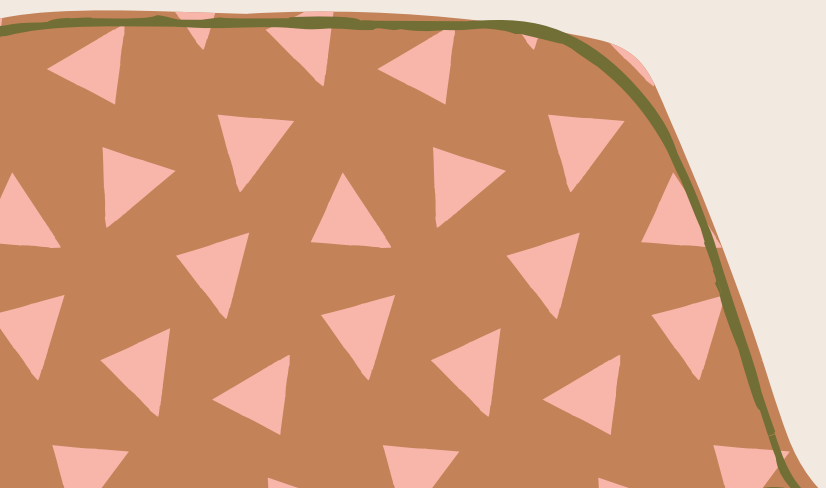
## 2. SAMPLE QUESTIONNAIRE

- Name
  - Class
  - How is college library?
  - Visiting time of library?
  - Is library easy to access?
  - Administration of Library
  - Is the timing of library suited to you?
  - Do you think that college library shall be opened on Sunday?
  - Is the college library useful for your subjects?
- 

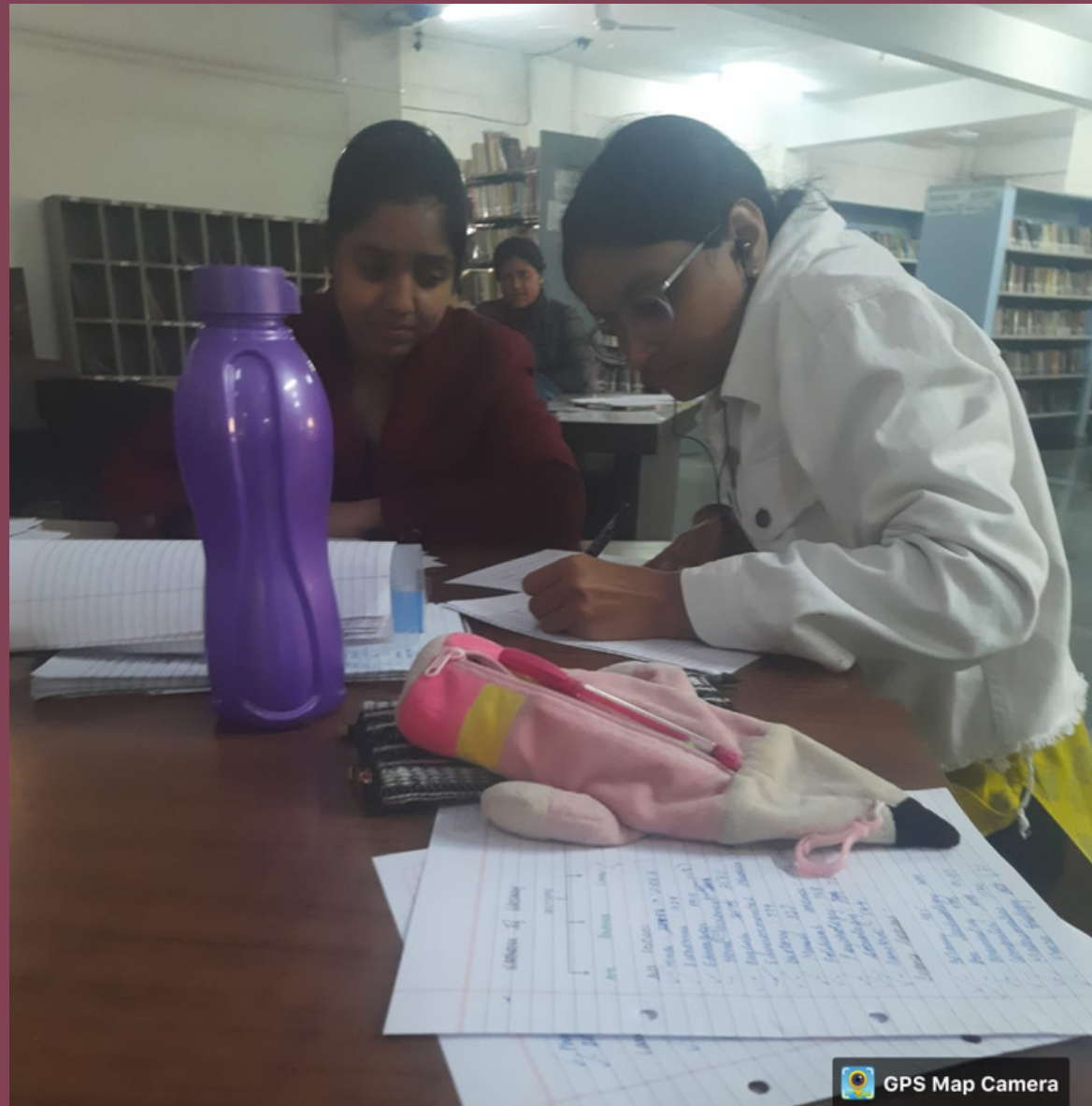
# CHAPTER 3

## 1. CHALLENGES

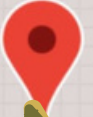
- It was hard to sort out the books, as other students who may have visited the library, used to take books from our sorted section and they keep getting shuffled.
- Old and tarnished books were hard to reference, as a lot of pages from them were missing.
- It was difficult to visit the library on weekdays when we had classes until late hours.





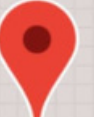


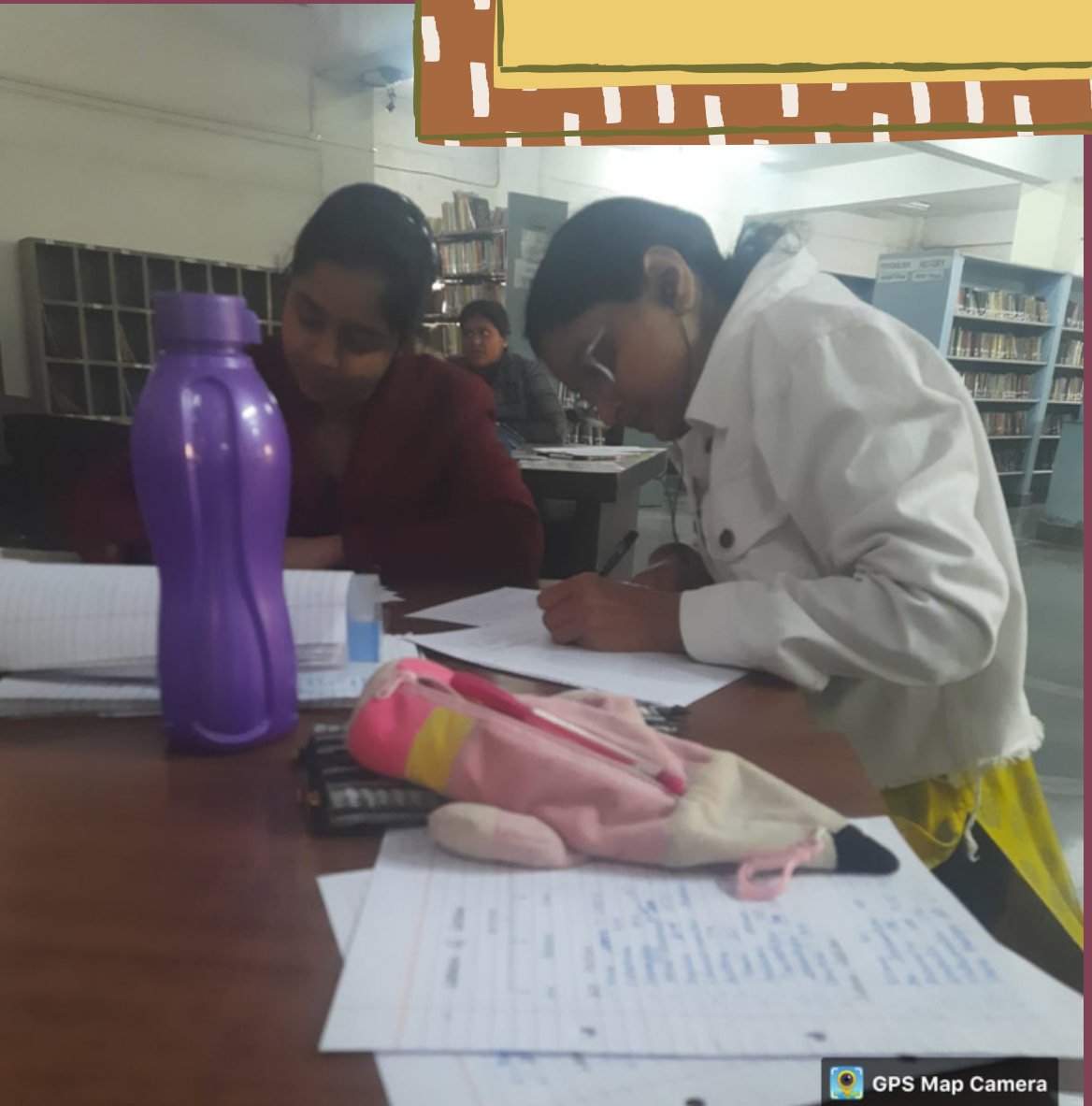
GPS Map Camera

  
**kasturba nagar bhopal**  
sri sathya sai college for women, central library  
Lat 23.227531°  
Long 77.444447°  
27/12/22 02:22 PM GMT +05:30

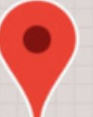


GPS Map Camera

  
**kasturba nagar bhopal**  
sri sathya sai college for women, central library  
Lat 23.227531°  
Long 77.444447°  
27/12/22 02:22 PM GMT +05:30



GPS Map Camera

  
**kasturba nagar bhopal**  
sri sathya sai college for women, central library  
Lat 23.227531°  
Long 77.444447°  
27/12/22 02:22 PM GMT +05:30



THANK  
YOU

